



SADA

AI-DRIVEN G SUITE FEATURES TO BOOST PRODUCTIVITY

Google's G Suite enables office professionals to harness the power of AI. Here are five productivity-boosting, AI-driven features in G Suite.

Introduction

From the beginning, Google designed **G Suite** to enable admin assistants and office professionals to harness the power of AI. **Google Cloud Platform's** goal for G Suite is to use AI and machine learning to enhance these employees' jobs, help them be more productive, and actively contribute to their organizations' business goals. Here are five of the most recent **AI-driven enhancements to G Suite**:



1 Google Docs Grammar Checker

Google's AI-powered grammar checker for Docs recently rolled out to all **G Suite business users**, where it is enabled by default. While grammar checkers have long been a staple of word processing solutions, the new Docs grammar tool is underpinned by the same machine translation technology utilized in Google's other linguistics projects, including Google Translate. Google wanted to build something that could go far beyond recognizing the difference between "you're" and "your." The idea was to build a tool that could "translate" incorrect grammar into correct grammar the same way Google Translate translates, for example, English into Spanish.





The Docs grammar checker was developed by a team of engineers, working in conjunction with computational and analytical linguists, with two decades of research in machine translation to draw upon. The team spent months developing ML models that could learn highly complex grammar rules, such as those governing verb tenses and prepositions.

The result is a new tool that helps Docs users improve their writing by analyzing their sentence structure and semantics in real-time to uncover inconsistencies or mistakes and offer suggestions. Because the tool employs **machine learning**, it is capable of learning industry-specific terms and colloquialisms, and Google will continue to use feedback from users to refine it going forward.

2 Smart Compose for Gmail

Smart Compose goes a step beyond the Docs grammar checker. The tool, which was trained using billions of phrases and sentences written by **Gmail** users, analyzes what a user has written in real-time and suggests text to complete their sentences, reducing the need for repetitive writing and the possibility of making a spelling or grammar error. Because it uses **ML algorithms**, Smart Compose learns a user's writing style over time and tailors its suggestions to make them sound more natural. Google is continuously improving the suggestion quality of Smart Compose and is working to incorporate personal language models to more accurately emulate each user's individual writing style.



3 Smart Reply for Hangouts Chat

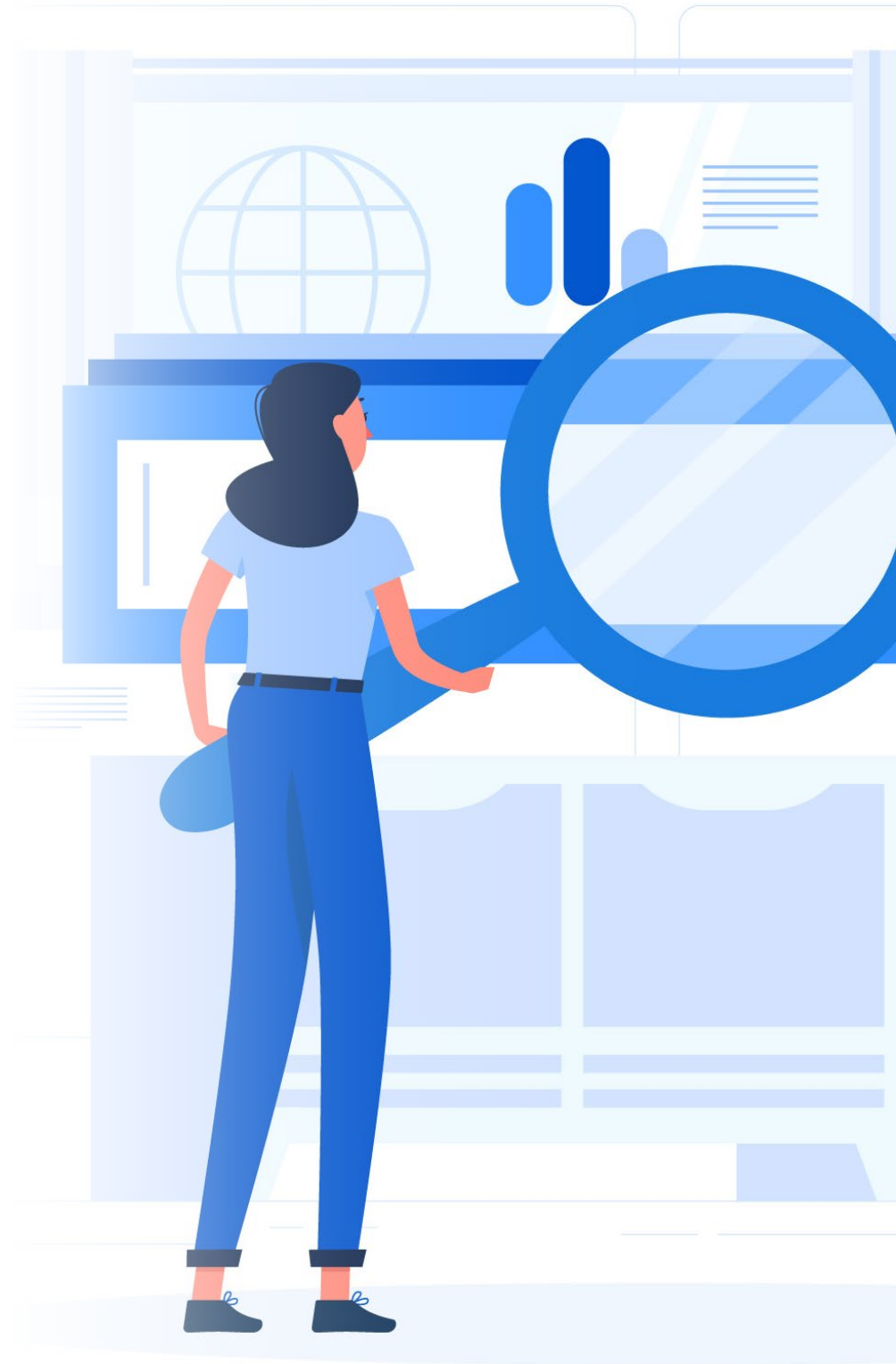
Smart Reply scans incoming email text and suggests quick, natural language responses, such as “I’ll be there” in reply to a request for a meeting or “Thanks; I’ll look it over” in response to a colleague sending a document for review. This time-saving feature is a natural fit for Hangouts Chat, where it determines which messages most likely need responses and provides up to three suggestions.



4

Significantly Expanded Cloud Search App

In today's fast-paced workplaces, electronic files need to be at employees' fingertips, retrievable at a moment's notice. One of the ways Google seeks to solve this problem is through Quick Access for **Google Drive**, which uses AI and ML to analyze a user's activity in drive and predict which files they may want to open next. But what if an employee needs to quickly find a lone file that was generated weeks or months prior?





Google has taken all of its research and resources as the undisputed king of internet search and poured them into the **Cloud Search** app, which seamlessly integrates with **G Suite**. The app uses natural language processing (NLP) to allow users to search for documents using natural language phrases, such as “my last meeting” or “docs edited by Tony.” In addition to being able to search all of G Suite, Cloud Search has been expanded to support third-party data sources, including Windows and SharePoint intranet files and MySQL and Oracle databases.

5

Explore for Docs, Sheets, and Slides

Explore is a set of AI tools for Docs, Sheets, and Slides that enables users to easily derive actionable insights from spreadsheet data, design highly polished presentations, and cite sources when writing reports.





● Explore for Sheets

Explore for Sheets is both a fantastic time-saver and a helping hand for the math-phobic. Similar to [Cloud Search](#), the tool utilizes NLP to let users ask Sheets to crunch their data in plain language. Instead of having to manually write mathematical formulas, users can ask questions such as, “How many teddy bears were sold on Valentine’s Day?” or “How many new users signed up last month?”

● Explore for Slides

Explore for Slides allows anyone to develop a professional presentation with no muss, no fuss, and no graphic arts expertise required. As users work, Explore analyzes the slide’s content and automatically makes design suggestions, which can be implemented with a simple click of the mouse. Explore even takes care of image cropping, resizing, and formatting, so users don’t have to worry about images being pixelated or spilling off the page. Google states that Explore can shave 30% off the time it takes to format presentations, allowing users to focus on content instead of graphics.

● Explore for Docs

Office professionals must frequently back up claims made in blogs, white papers, business cases, and other business documents with data from third-party sources. As users write, Docs analyzes the text in real-time and suggests related topics, additional content, and images from both Google Drive and the web. Users can perform searches and add images, charts, and additional information right from Explore, without ever leaving Docs, reducing time spent clicking between applications and tabs. Users can cite information as links or automatically formatted footnotes.



About SADA

SADA is a global leader in providing business and technology consulting services that transform organizations. SADA has proven expertise in enterprise consulting, cloud platform migration, custom application development, workplace transformation, cloud managed services, and change management. As a Google Cloud Premier Partner with multiple Specializations, SADA has gained global accolades and awards including the 2018 Google Cloud Global Partner of the Year and 2017 Google Cloud North America Partner of the Year. SADA's team of certified experts help enterprises modernize by providing innovative cloud solutions to accelerate digital transformation leveraging the entire Google Cloud portfolio.



“ We were encouraged by the positive responses from employees when we announced we were going Google. We knew it was going to be a major change management effort to go to a new collaboration platform. Working with Google and SADA Systems, in one weekend in November we took 23,000 users live, and a total of 28,000 users live globally within six months. ”

Mike Crowe | CIO, Colgate-Palmolive

A Few of Our Clients



CONDÉ NAST

